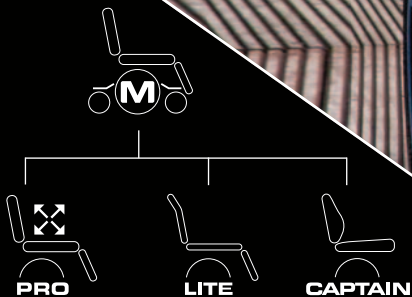



QUICKIE

Compact in Size
BIG on Performance



Q300W Mini



POWER OF QUICKIE

A close-up, low-angle photograph of a QUICKIE power chair chassis. The image shows the black leather seat, the metal frame, and the large, treaded rear wheel. A red spring is visible near the front wheel. The QUICKIE logo is visible on the side of the chassis. The background is dark, making the metallic and leather components stand out.

QUICKIE® delivers the world's most comprehensive range of innovative, technically advanced power chairs, created specifically for your clinical and lifestyle needs.

ADVANCED ELECTRONICS

Controllers are optimized to offer the greatest power for max performance. QUICKIE offers multiple joystick configurations, assignable buttons, on-board programming, and Bluetooth/IR controls. Also available are more battery choices to meet your needs and lifestyle.

SOLID CHASSIS

Chassis is formed from a single sheet metal plate for a stronger, more rigid design. (Others are welded or bolted together.) Steel components undergo automotive undercoat plating to resist rust and corrosion.

OCCUPIED TRANSIT

Tested for ISO-7176 Occupied Transit, included at no charge.

END OF LINE TESTING

After a chair is built, QUICKIE performs a final test for performance, noise, and quality, above and beyond industry requirements.

ENGINEERED FOR CONVENIENCE

QUICKIE engineers are not solely focused on performance and quality, we also thought about convenience and serviceability. QUICKIE Q series power chairs are designed for parts commonality, easy battery access, and simple servicing.

QUICKIE MOTORS



Our robust motor technology can't be replicated anywhere else. That's because we've spent years working closely with our manufacturer to develop a longer-lasting, highly efficient motor with improved performance, drivability, and range.

DESIGNED TO LAST

Unlike some of our competitors, QUICKIE motors feature metal gears instead of plastic. Polished for low noise and high efficiency, our all-metal gears exceed expectations in the toughest conditions. We go the extra step in polishing those gears because we believe that a little extra effort goes a long way in creating a better ride.

ENGINEERED FOR PERFORMANCE

We've designed our motors to give you the control you need in small spaces without sacrificing the power you want to tackle obstacles. QUICKIE 4-pole motors generate 18% more power than previous generations, plus you'll be able to drive 10% further on the same battery capacity.

MORE EFFECTIVE COOLING

Larger cooling fins enable heat to escape more effectively, reducing your risk of thermal rollback. So you can drive 25% further and faster when combined with the additional boost, even when on an incline or faced with uneven surfaces.

POWER BOOST

Our controller and motor combination work together to provide you with an additional 10 seconds of boost for extra power whenever you need it.

Q300M Mini

ULTRA-NARROW 20.5" BASE!

The Q300 M Mini's ultra-compact base is so narrow, it'll go where other powerchairs can't go. Whether it's a complicated living room, a tight kitchen or a narrow doorway, the Q300 M Mini fits into your life.



ULTRA-COMPACT 17" TURNING RADIUS

Thanks to its TRUE mid-wheel drive technology, the Q300 M Mini turns on the spot, for an ultra-small 17" turning radius (without footplates). In comparison, RWD and FWD powerchairs need to 'swing' around on its front or rear drive wheels, so the turning circle is wider.

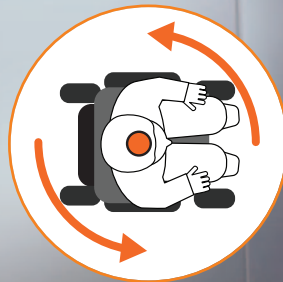
At just 33" in length the Q300 M Mini easily fits in and out of the smallest elevators, through doorways, and within tight spaces, such as kitchens. With a base weight of just 110 lbs, it's also light enough to be used with most lifts.

WHAT IS TRUE MID-WHEEL-DRIVE ?

It's when the powerchair's drive wheels are center to its length. If positioned more towards the front or rear, the turning circle is wider (and there's more of the powerchair swinging around). There's also less weight on the drive wheel, reducing traction. Its TRUE Mid-wheel drive design provides the most compact turning circle and increased traction and stability.



20.5" WIDTH



TRUE MID-WHEEL DRIVE

33" BASE LENGTH

QUICKIE



ELEVATE AND DRIVE WITH C-ME[®]

No more waiting around or driving at a reduced speed when elevated. C-Me enables you to elevate up to 12" while traveling up to 3 mph! You can lift or descend at the touch of a button with no need to stop while transitioning. Just rise-up and go at the same time.



CLIMB CURBS UP TO 3"

SMALL BUT POWERFUL

Powered by a strong Group 22 – 50 Ah battery, the Q300 M Mini takes you everywhere you want to go.



ULTRA LOW SEAT HEIGHT

Fit comfortably under tables or when driving your wheelchair-adapted-vehicle with the Q300 M Mini's ultra-low seat-to-floor height, starting from 16.5" (with fixed tilt).



CHOOSE YOUR SEAT FRAME

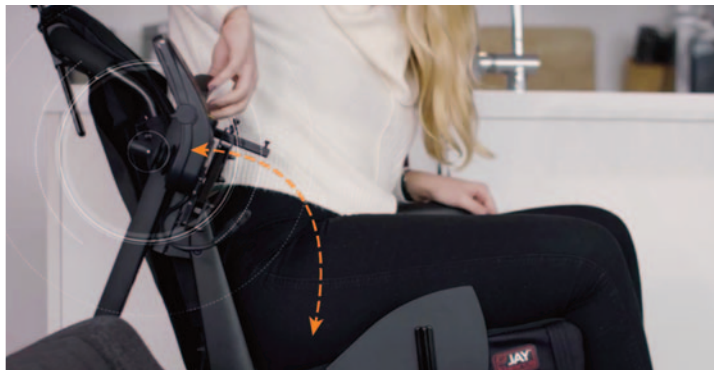
SEDEO® PRO™

Truly modular in design, the SEDEO PRO SEAT FRAME provides a new level of functionality, comfort and design. For moderate to complex clinical needs, the PRO combines a highly adjustable seat frame with an excellent choice of postural support options.



SEDEO® LITE™

The SEDEO LITE is an adjustable seat frame with a sleek look. Its minimal design alleviates weight capacity concerns when using aftermarket equipment. Traditional back canes are width-adjustable from 15" to 20" and easily fit JAY® backs. An array of options cover mild to moderate clinical needs, and intuitive adjustability meets individual requirements.



EASY TRANSFERS WITH FLIP-BACK ARM SUPPORTS

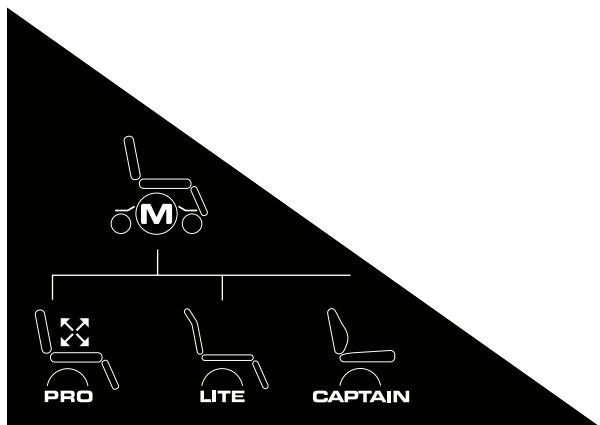
If you struggle with transferring in and out of your powerchair, the arm supports on Q300 M Mini easily flip backwards, giving you additional space. You also have a choice of removable or reclining versions too.

CAPTAIN'S SEAT

The Captain's Seat provides a relaxed sitting position and features a semi-recline, fold-down back, adjustable seat depth, and convertible seat pan that allows you to use your preferred cushion. Available with a 50° tilt and power centermount leg support.



Available through Built-4-Me®.



SEAT FRAME COMPARISON	SEDEO PRO	SEDEO LITE	CAPTAIN'S SEAT
Clinical Need	Med to High	Med to High	Low
CryoFluid™ (Available only on JAY® Fusion & Syncra Seating)	•	•	•
Powered Recline with 4" of Shear Reduction (150°)	•	X	X
Semi Power Recline Option (130°)	•	X	X
Manual Recline Option	•	X	•
Power 50° Center of Gravity Tilt	•	•	•
Power Leg Support	•	•	•
12" Elevate with C-Me	•	•	•
Seat Width	16" to 22"	15" to 20"	16", 18", 20"
Seat Depth	14" to 22"	16" to 22"	16" to 22"
Back Height	21" to 30"	18" to 30"	25"

SEDEO® PRO™ HIGHLY PERSONALIZED SEATING

The SEDEO PRO is a fully adjustable and configurable seating frame with a wide range of comfort cushions and positioning options. With its diverse selection of arm supports, armpads, leg supports, seat and back cushions, head supports, and positioning accessories, SEDEO PRO offers great flexibility to adapt to individual needs.

QUICK AND EASY TO ADJUST

We've made it easy for healthcare professionals to create the right seating posture and maintain it for changing needs.

- Intuitive adjustments using just one tool
- A wide range of adjustments for varying and changing needs
- Seat width and depth, back height, and arm support width all can be adjusted and repositioned to create the best support in the shortest amount of time



WIDE ARRAY OF OPTIONS



TILT, ELEVATE, AND RECLINE

The SEDEO PRO offers 50° of tilt with automatic COG adjustment for improved weight distribution and stability. In addition to the low seat-to-floor height, enjoy 12 inches of elevate, rated at up to 300 lbs!



BACK SUPPORT OPTIONS

Choose from 4 options: (1) fixed, (2) user-adjustable manual semi-recline, (3) 130° powered semi-recline or (4) a 150° powered recline back. The 150° powered recline back offers 4" of anti-shear to minimize the sliding between you and the cushion.

LEG AND FOOT POSITIONING

The SEDEO PRO offers a full array of foot support options. You can choose a power elevating and articulating leg support which allows for optimal positioning and comfort. Power elevating leg supports are available as centermount or individual swing-away versions. Alternatively, you can choose a manual elevating swing-away leg support or traditional fixed angle style in both swing-away or centermount.

EXCEPTIONAL, VERSATILE POSITIONING

Many positioning elements are available such as head support, lower extremity supports, swing-away lateral thoracic supports, thigh supports, or knee supports. All positioning elements are adjustable and detachable or can be swung out of the way for easier transfers.

FLIP-BACK ARM SUPPORTS

The easy to operate flip-back arm support gives you unencumbered transfer space. Choose from a removable or reclining version. A single post removable arm support is also available. All are compatible with four armpad options.



SEDEO® LITE™

SIMPLE, ADJUSTABLE SEATING

Sometimes less is more. The SEDEO LITE is an adjustable seat frame giving you a simple, sleek look. Its minimal design alleviates weight capacity concerns when using aftermarket equipment. As one of the lightest seating systems in the market, the SEDEO LITE has a starting weight of 266 lbs, making it a great solution for many hitch mounted lifts.

EASY TO ADJUST

Effortlessly make a wide range of adjustments using just one tool!

- To accommodate changing requirements, seat widths can adjust between 15" and 20", and seat depth can adjust between 16" and 22".
- The easy-to-operate, flip-back arm support gives you unencumbered transfer space.
- With 5" of arm support height adjustability and a large array of adjustable options available on the SEDEO LITE, it is easy find the right fit.
- The side seat rail allows for additional mounting solutions such as transfer bars, thigh supports and knee supports with infinite adjustment.
- The back canes are width-adjustable from 15" to 20".



FIND THE PERFECT FIT WITH NOTHING EXTRA TO WEIGH YOU DOWN



TILT AND ELEVATE

The SEDEO LITE offers 50° of tilt with automatic COG adjustment for improved stability. In addition to the low seat-to-floor height, enjoy 12 inches of elevate, rated up to 300 lbs!



SEATING AND SUPPORT OPTIONS

- The traditional back canes easily fit a range of JAY® backs, and the clamp hardware allows infinite height adjustment.
- Alternatively, you can choose a height-adjustable sling back with adjustable straps.
- Choose from a selection of Whitmyer® or SEDEO® head supports – compatible whether you opt for a traditional back mount or the integrated mount with the sling.



FOLD-DOWN BACK

With transportation in mind, the lightweight seat is complimented with a fold-down or removable back to provide one of the most compact power seating systems in the market.

LEG AND FOOT POSITIONING

The SEDEO LITE offers a full array of leg support options. Choose from multiple centermount options such as fixed, power, or angle-adjustable.



JAY® SYNCRA™ SEATING



POSITIONED FOR RECLINE

JAY® Syncra™ is a cohesive and attractive seating system specifically designed for performance with tilt and recline systems. Syncra has a width and height adjustable back, a cushion that fits mild to complex seating needs, and positioning accessories for support and stability.

JAY® Syncra™ is the optimal seating for power wheelchair users who have a history of pressure injuries.

DESIGNED EXCLUSIVELY FOR
THE QUICKIE® SEDEO® PRO™

JAY CRYOFLUID™

The JAY Syncra cushion is also available with the revolutionary, patented JAY Cryo™ Technology. JAY Fluid evenly distributes pressure across the seating surface and around bony prominences while the CryoFluid™ actively cools the skin for up to eight hours.* The combined technology offers a dramatic improvement in tissue injury prevention.



*Internal testing data at 25°C. Results may vary.

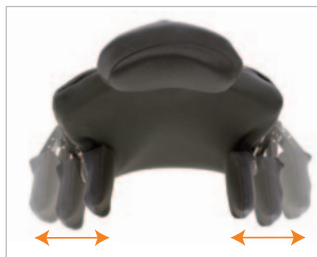
JAY® & WHITMYER® SEATING OPTIONS

A wide range of JAY cushions and backs are optimized to fit the SEDEO PRO or SEDEO LITE for advanced positioning capabilities. All the style, comfort and adjustability you've come to love with WHITMYER has been carried over to SEDEO Seating.

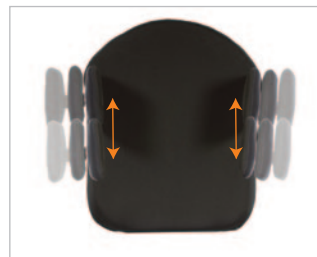
Designed for pelvic stability, skin protection and comfort, JAY cushions and backs are low maintenance, highly personalized and available in a wide variety to meet your needs.

JAY SWING-AWAY LATERAL

New slim profile design with improved locking strength and two pivot points for maximum adjustability.



Multiple width adjustments



Multiple height adjustments



JAY Fusion®

JAY J3® Back

WHITMYER® HEADRESTS

Purposefully engineered to address a range of needs from basic support to multiple-point control, WHITMYER head supports have five mounting options and a variety of pad shapes and sizes for superior head positioning and comfort.



Contoured Cradle w/LINX²



PLUSH w/AXIS



PLUSH w/Cobra



Adjust-A-PLUSH w/LINX

R-NET ADVANCED JOYSTICK

The Q300 M Mini is available with the superior R-net Advanced Joystick. A large, easy-to-read display – largest in the market – and simple to control paddle switches allow for intuitive operation.

CONNECT

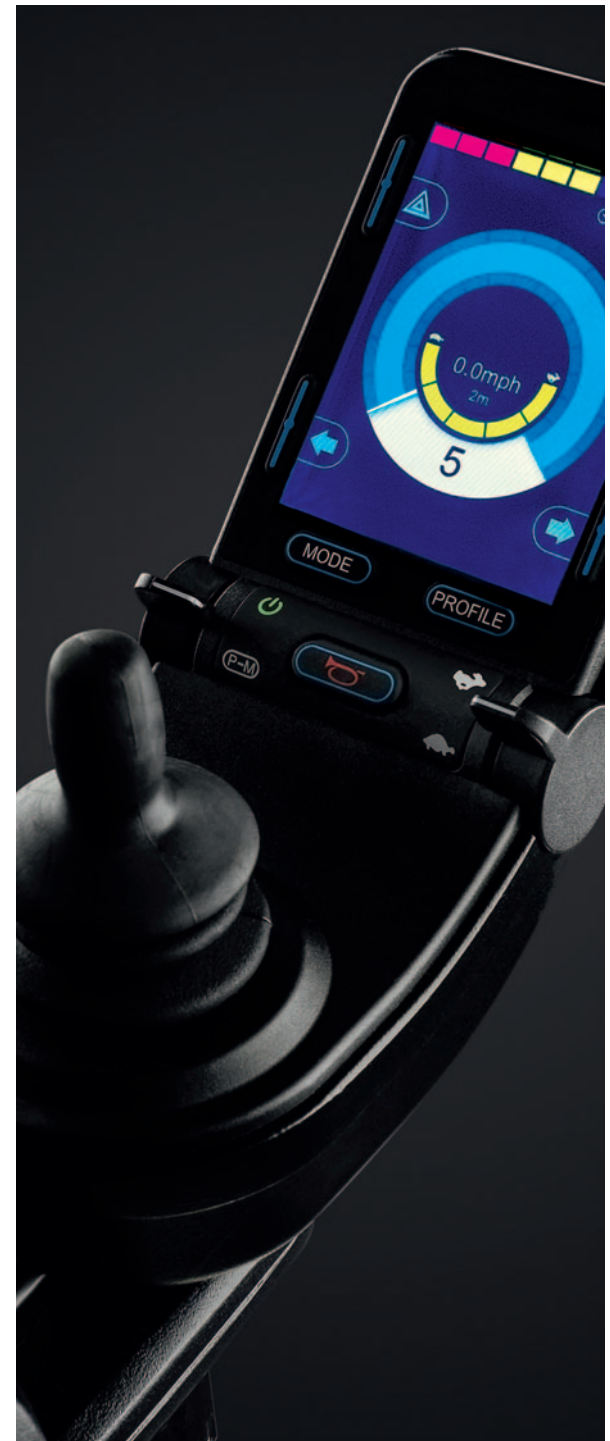
Seamlessly take control of your environment using the integrated infrared functionality. Use your joystick like a remote control for your TV and select home entertainment systems.

BLUETOOTH® WIRELESS TECHNOLOGY

Control your phone, computer, tablet and all Bluetooth® devices with this useful option. Connect and control up to four devices. Compatible with Android® and Apple® iOS devices.

QUICKIE PATENTED ASSIGNABLE BUTTONS

Change the function of any button on your joystick to any command you desire, thanks to QUICKIE assignable buttons. You can also assign a second (long press) function to buttons, giving you quicker, simpler and smoother access to functions you commonly use without having to use your joystick.



SWITCH-IT™ INNOVATIVE CONTROLS

CTRL+5®

Conveniently access five seating functions with the Ctrl+5. It allows you to go straight to the function you need at the touch of a button.

Available in push-button (shown) or toggle.



ALTERNATIVE DRIVE CONTROLS

If driving with a traditional joystick is not the best option, alternative drive controls allow you to fully experience your chair's driving capabilities and benefits.

MICROGUIDE– Light-touch proportional control.

If you could benefit from light force requirements but need the feedback of joystick movement, the MicroGuide is the ideal choice.

VERSAGUIDE– Compact proportional control.

Fully proportional, durable, and compact, the VersaGuide can be mounted virtually anywhere. It comes with two on/off, mode SmartJacks which automatically adapt to both proximity and mechanical switches.

DUAL PRO®– Truly proportional head array for intuitive driving.

The Dual Pro is a truly proportional head array with fine-tuned adjustments. The Dual Pro can be programmed conveniently from the back of the head array and personalized to your strengths and capabilities.



LINK-IT™ MOUNTING SYSTEM

Need to use additional switches or specialty controls? No problem! Easily connect them using the universal Link-It Mounting System.

Using a combination of available modules and rods, create endless combinations. It's easy to position and ensures your wheelchair maintains its sleek look. Whether it's an extra controller on the armrest, a push button on the back support or a switch on the headrest, just link-it.



CAPTAIN SEAT RELAXED COMFORT



Available through Built-4-Me®.



Shown on a Q500 M base.

The Captain's Seat provides a relaxed sitting position and features a semi-recline, fold-down back, adjustable seat size, and convertible seat pan that allows you to use your preferred cushion. Available with a 50° tilt and power centermount leg support.

- Depth adjustable seat size, leg support placement, and arm support width
- Convertible seat pan for flexibility in cushion selection
- Semi-recline and fold-down back
- Optional oxygen, crutch, and walker holders



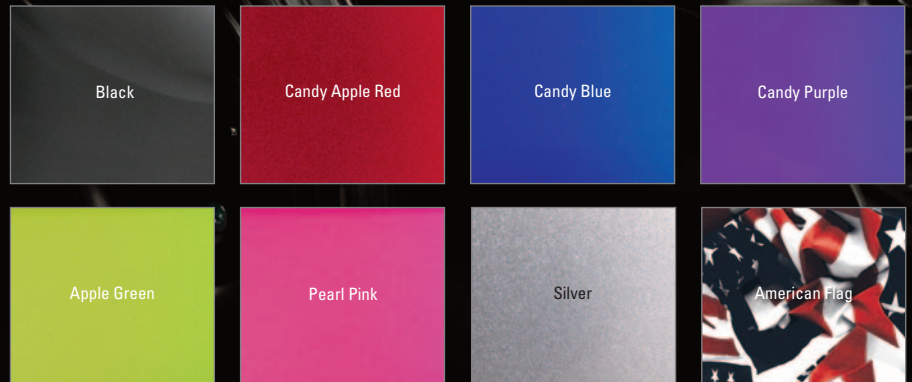
DISTINGUISHED STYLE

With the Q300 M Mini, we've taken style to the next level. With a black chassis finish, hidden wiring and premium upholstery, the Q300 M Mini has a sleek and contemporary design.

The Q300 M Mini comes with a Black shroud and your choice of six contemporary color inlays to beautifully accent the black bodywork. Fancy a change? Simply replace the color inlays. Styling your powered wheelchair has never been so simple.



Additionally, the Q300 M Mini offers your choice of eight different shroud colors to reflect your personal style. (Color accents are only available with the Matte Black shroud.)



IMPORTANT NOTE– Print processes cannot accurately represent painted colors. Actual colors may vary. For more accurate representations of colors, refer to the QUICKIE/ZIPPIE Color Guide or a QUICKIE Color Ring.

Q300 M Mini Specifications

HCPCS codes	Group 3 – Standard Duty No Power Seating: K0848 Single Power Seating: K0856 Multi Power Seating: K0861
Max. user weight	300 lbs.
Seat width	15" to 22"
Seat depth	14" to 22"
Seat-to-floor height	16.5" to 19"
Back height	18" to 30"
Total width	20.5"
Total length (without footplates)	33"
Min. turning radius (without footplate)	17"
Max. speed	6 mph
Battery size	Group 22 – 50 Ah
Overall weight	No Power Seating: starting at 250 lbs. Single Power Seating: starting at 274 lbs. Multi Power Seating: starting at 322 lbs.
Drive wheel position	Mid
Max. Ground clearance	3"
Wheel options	12" drive wheels, 7" casters
Max. range	Up to 12 miles
Transit Securement Brackets	ISO 7176-19:2008 Transit Approved



See order form as specifications may vary based upon configuration.



Sunrise Medical (US) LLC, Fresno, CA 93727
MK-129903 Rev.A ©01.2021

800.333.4000 www.SunriseMedical.com

